

Superintendent's Report

DUVAL COUNTY PUBLIC SCHOOLS

September, 2017 School Board Meeting

Hurricane Irma Update

1



Reopening

Barriers
Partner Support
Staff Support

2



Recognitions

Essential Workers
Volunteers
Partners

3



DOE Notices

Displaced Families
DOE Extensions
Survey Information

4



Make Up Days

Coordinate with DOE
Collaborate with DTU
Board Approval

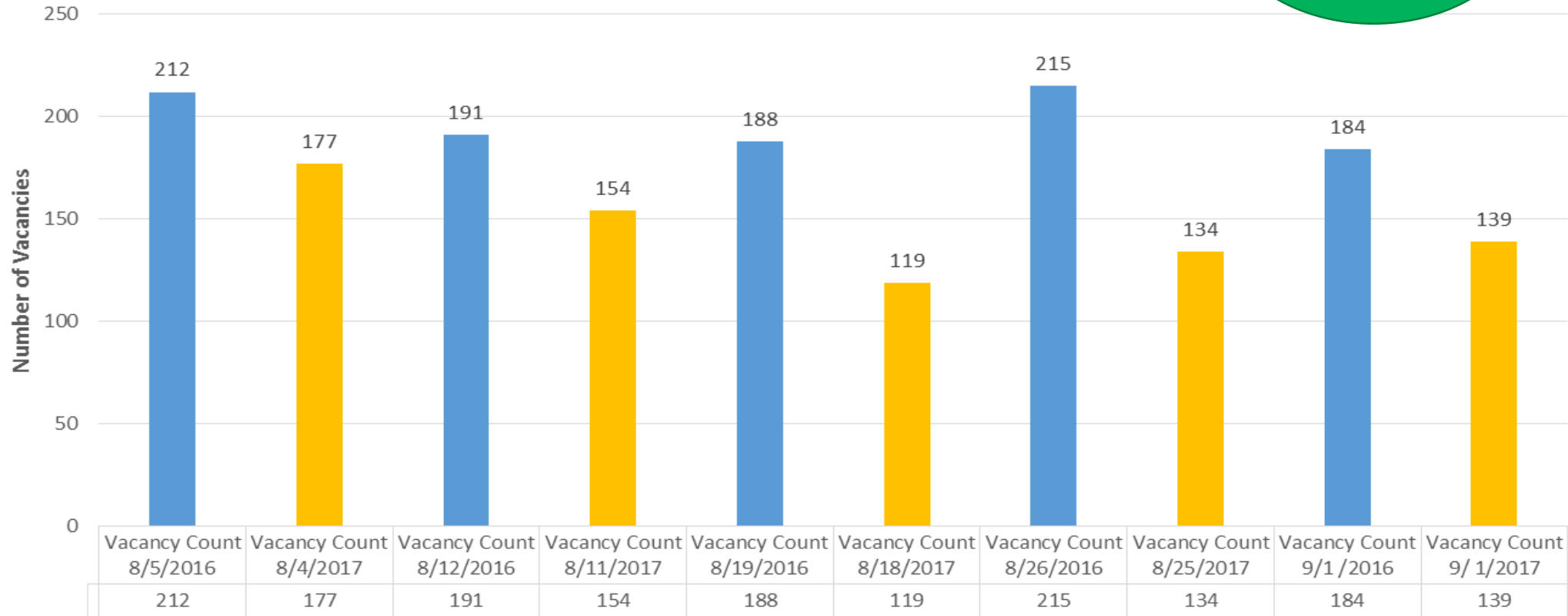


Staffing Report

As of September 1, 2017

98% of positions staffed

Historical Snapshot 2017 vs 2016



Vacancies by Week



Student Enrollment

As of September 18, 2017

| Year | Day 10 | Day 19 |
|------|---------|---------------------|
| 2016 | 128,175 | (Day 20) 128,463 |
| 2017 | 128,718 | 128,796 |

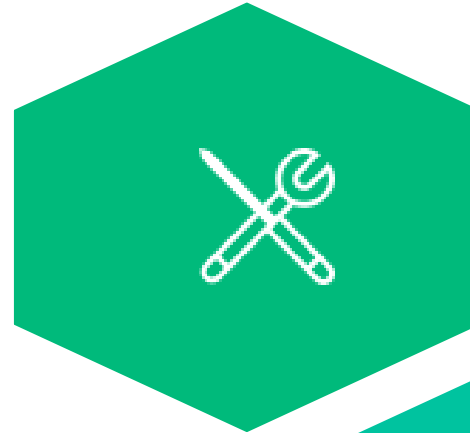




HURRICANE IRMA OPERATIONS REPORT

Pre-Storm Preparations

Hurricane Irma Operations Report



Maintenance Staff

107 employees
Shelter generators checked and refueled
Shelters shuttered

Bus contractors moved buses inland
District vehicles relocated

Vehicle Placement



Shelter Supplies

Delivered by 11 employees:

- 1335 Special Needs Cots
- 1235 Standard Cots
- 315 Animal Cages
- 800 Sleeping Mats
- 1400 Blankets



District Shelter Staffing

Hurricane Irma Operations Report



Shelters

Hurricane Irma Operations Report

General Purpose Shelters

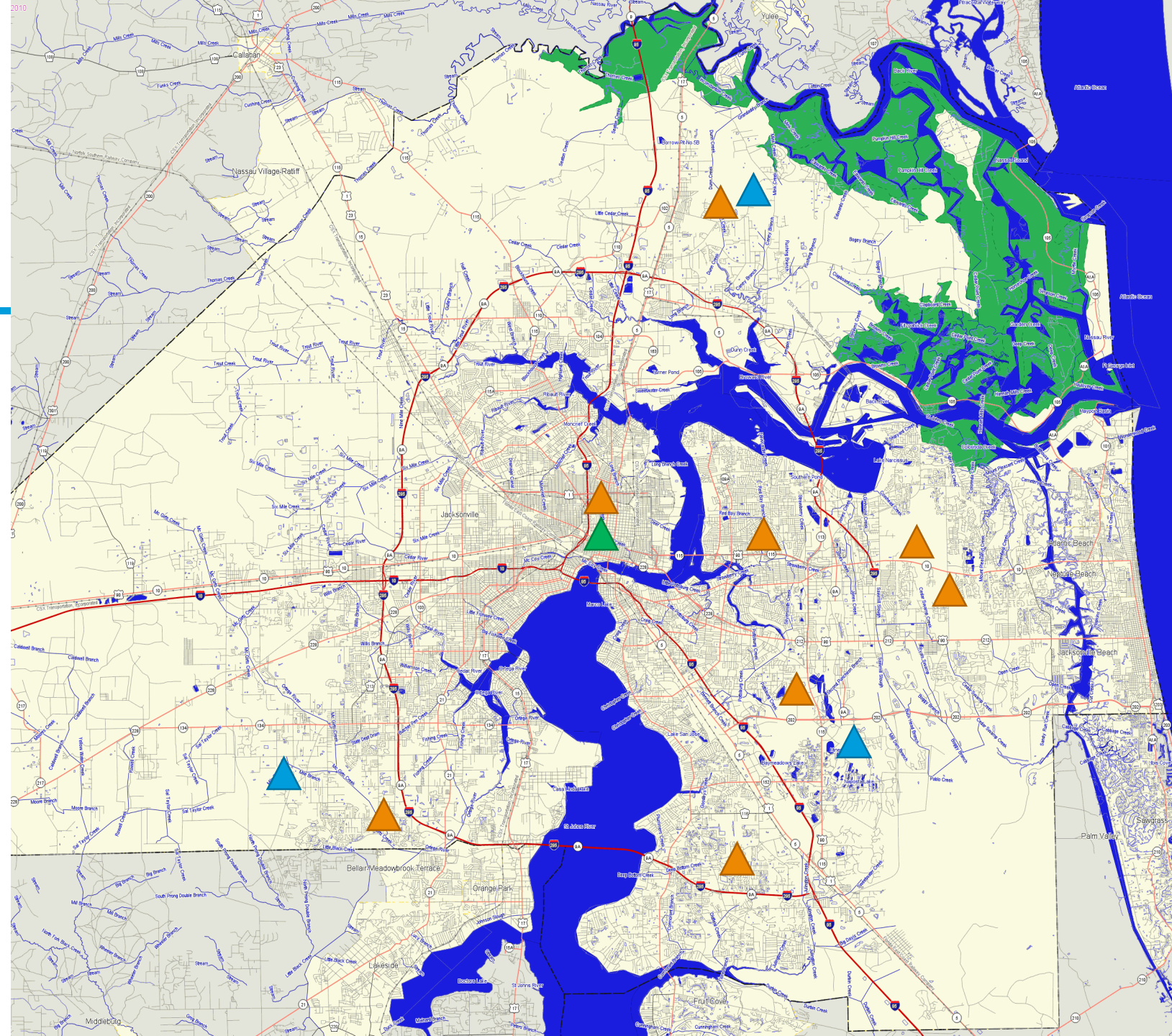
- Landmark MS
- Twin Lakes ES
- Chimney Lakes ES
- Mandarin MS
- Oceanway ES
- Abess Park ES
- Andrew Robinson ES
- Arlington MS

Special Needs Shelters

- Atlantic Coast HS
- Oceanway MS
- Enterprise ES

Other

- LaVilla MS



Shelter Utilization

Hurricane Irma Operations Report



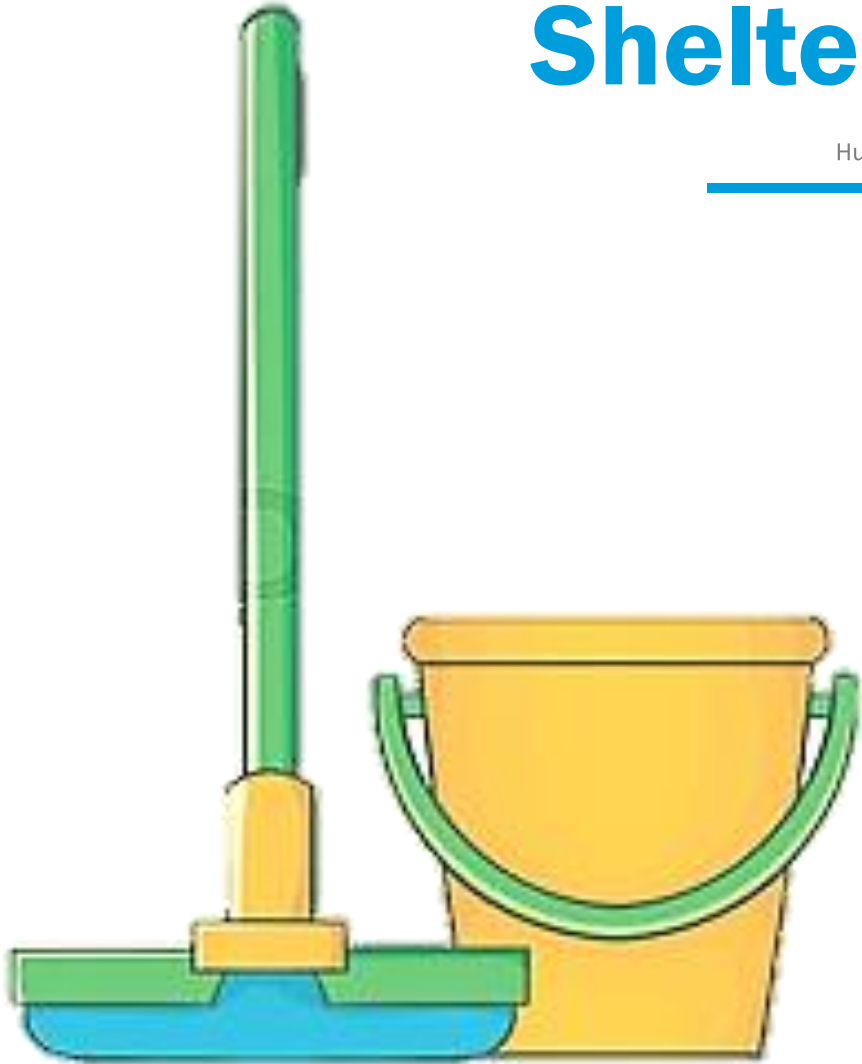
| School | Occupancy | Capacity |
|---------------|-----------|----------|
| Abess Park ES | 72 | 2600 |
| A. Robinson | 160 | 1800 |
| Arlington MS | 159 | 1700 |
| Chimney Lakes | 353 | 3000 |
| Landmark MS | 722 | 2200 |
| Mandarin MS | 178 | 1500 |
| Oceanway ES | 179 | 600 |
| Twin Lakes ES | 238 | 1700 |

| School | Occupancy | Capacity |
|-------------------|-----------|----------|
| Atlantic Coast HS | 169 | 500 |
| Enterprise ES | 83 | 350 |
| Oceanway MS | 94 | 200 |



Shelter Draw Down

Hurricane Irma Operations Report



- Gradual Close Down of Shelters
- Post Storm Shelter Clean Up
 - 30 GCA custodians assigned to each shelter
 - 4 hours to sanitize each shelter and prepare for opening of school



Food Service

Hurricane Irma Operations Report

Chartwells food service teams conducted damage assessments visits beginning Tuesday, September 12th

Food Loss

Food discarded at 58 schools due to loss of power

Nutrition Service Center

No product loss due to generator

Kitchen Prep

All kitchens cleaned and no damage reported to food service equipment

Food Delivery

Fresh food delivered to all schools with minor adjustments to menus and updates provided online

The Department of Agriculture has authorized no charge meals for all students in impacted counties through October 20th.

Transportation

Hurricane Irma Operations Report



CONTRACTORS

Coordinated with Contractors



FLEET CONDITION

Checked on condition of bus fleet



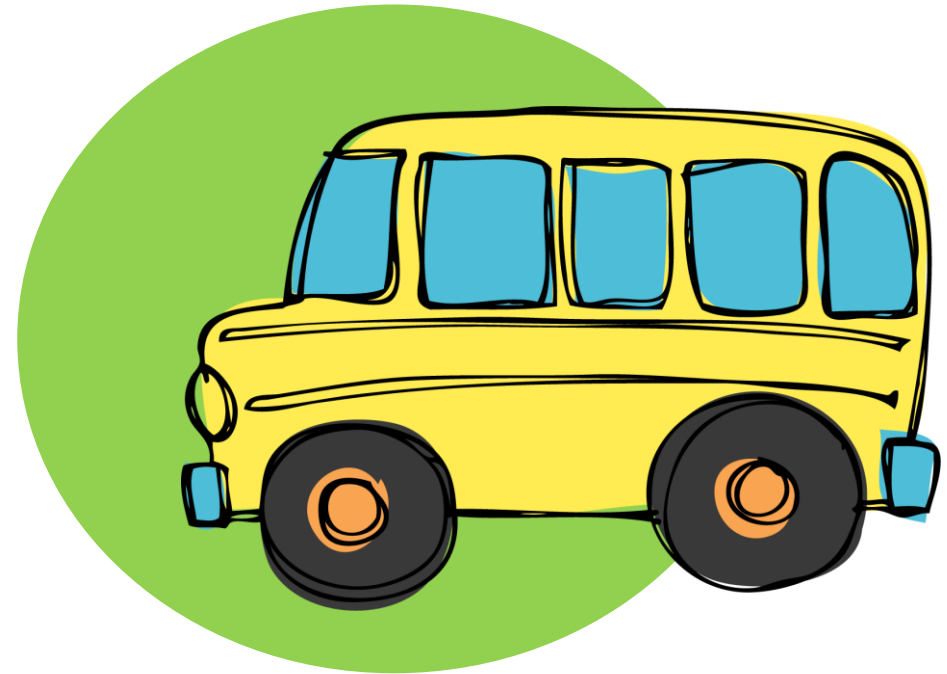
ROAD ACCESSIBILITY

Checked accessibility of roads on problematic bus routes



ACTION PLAN

Action Plan developed for Browns Creek



Maintenance

Hurricane Irma Operations Report

Post-Storm - 122 schools without electricity

- Power restored to last school Wednesday, Sept 13th
- Outstanding support and coordination with JEA
- JEA teams assigned specifically to restore school power

Damage Assessment conducted Monday, Sept 11th and Tuesday, Sept 12th

- 8 DCPS School Resource Officers
- 42 Maintenance Staff recalled

WED September 13

- 162 Employees Reporting

THURS September 14

- 144 Employees Reporting

FRI September 15

- 148 Employees Reporting



Storm Damage

Hurricane Irma Operations Report

Fallen Trees and Limbs

- Goal to remove or cut down all trees or limbs that pose a safety hazard
- Removal of down trees will take weeks

Water Intrusion

- Blowing rain
- Loss of flashing
- No school flooded due to rising water

Roofing

- Minimal damage at three schools

Water Line Damage

- Due to tree uprooting



Storm Damage (Part II)

Hurricane Irma Operations Report

Windows

- Four broken windows
- Replacements ordered

Ceiling Tile Replacement

- Approximately 350 tiles have been replaced
- 150 tiles remaining to be replaced

Grounds Cleaned

- Ongoing

Hurricane Shutters

- Completed today



Questions?

Operations Report