

TROOP G

I-95 CRASH HOT SPOTS

April 2014 to April 2015

Duval • Flagler
• Nassau • St. Johns

***Crash data is continually being submitted to DHSMV databases. Therefore, results may continue to change depending on the search criteria used, and the time of data retrieval. A marginal percentage variance may exist.*



This report is created to help develop proactive enforcement initiatives for the Florida Highway Patrol.
For internal use only, information is sole property of FHP.

Florida Highway Patrol Author: Michele Snow , Prepared: May 19, 2015



Crashes Along Interstate I-95

	Crashes Along I-95						
	Crashes		Injury Crashes		Fatal Crashes		
Duval	1193	69.6%	373	65.1%	7	Actual Fatalities: 7	33.3%
Flagler	93	5.4%	48	8.4%	2	Actual Fatalities: 2	9.5%
Nassau	73	4.3%	27	4.7%	3	Actual Fatalities: 3	14.3%
St. Johns	354	20.7%	125	21.8%	9	Actual Fatalities: 13	42.9%
Total	1713	100.0%	573	100.0%	21	Actual Fatalities: 25	100.0%

-1713 Crashes

-573 Injury Crashes

-21 Fatal Crashes

-Total Fatalities Along I-95:

Duval: 7 Fatal Crashes with 7 Fatalities

(7 Fatal Crashes with 7 Fatalities within Crash Hot Spots)

Nassau: 3 Fatal Crashes with 3 Fatalities

(2 Fatal Crashes with 2 Fatalities within Crash Hot Spots)

St. Johns: 9 Fatal Crashes with 13 Fatalities

(4 Fatal Crashes with 5 Fatalities within Crash Hot Spots)

Flagler: 2 Fatal Crashes with 2 Fatalities

(0 Fatal Crashes with 0 Fatalities within Crash Hot Spots)

Total: 21 Fatal Crashes with 25 Fatalities along I-95

(13 Fatal Crashes with 14 Fatalities within Crash Hot Spots)



Crash Analysis-Areas of Interest: I-95 -Past Year (April 14-April 15)

Nassau County: 73 Crashes on I-95 within the Past Year, 27 Injury Crashes, 2 Fatal Crashes

Two Main Areas for Crashes Along I-95 in Nassau County (US 17 and SR 200).

Chart shows numbers of Crashes, Injury Crashes and Fatal Crashes in each spot.

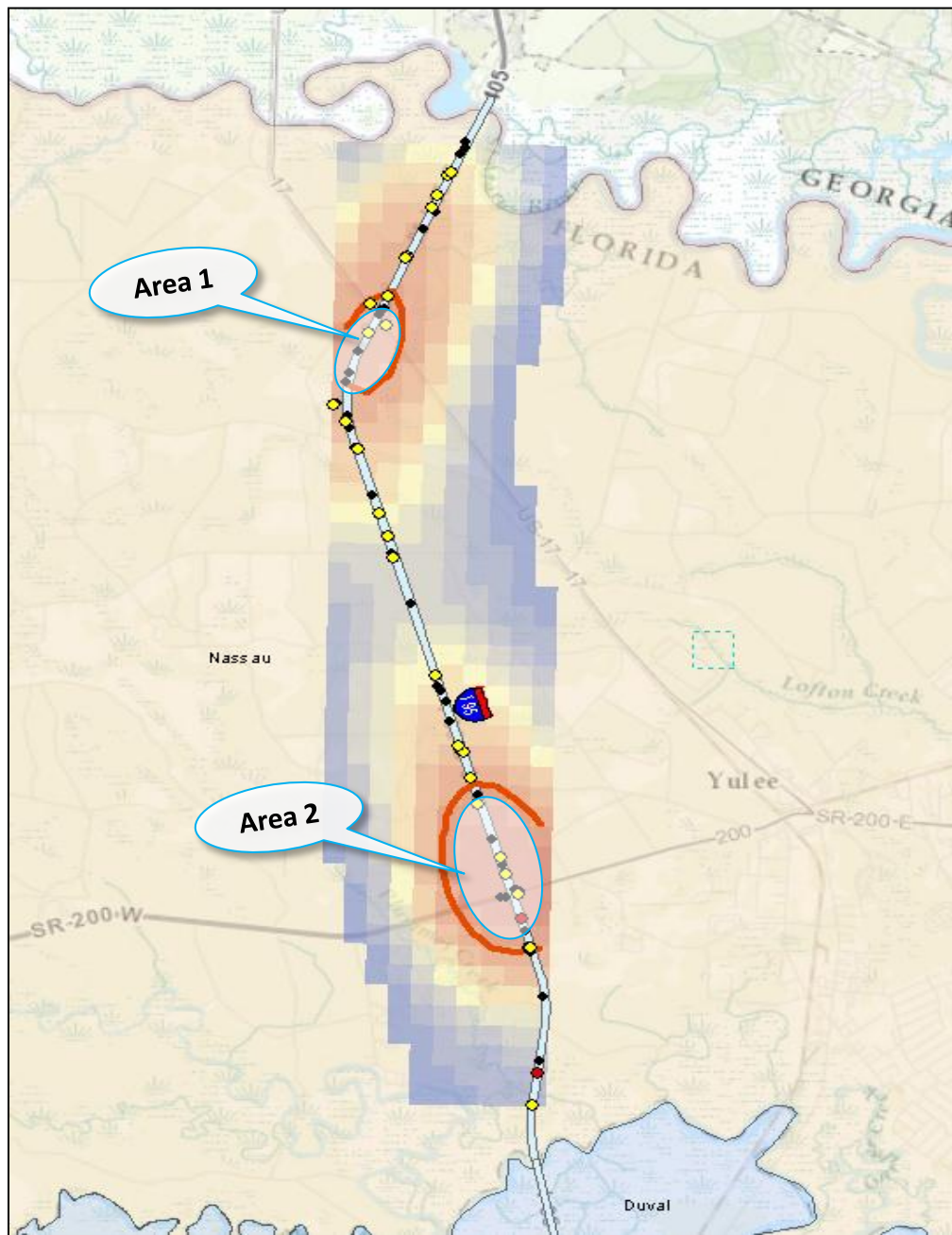
Percentage of the totals compared to the Hot Spots and Percentage of the totals compared to the overall number of crashes along I-95.

Nassau County Crashes Along I-95	Crashes Along I-95								
	Crashes 73			Injury Crashes 27			Fatal Crashes 2		
	Crashes	% of Hot Spot	% of Total Crashes	Injury Crashes	% of Hot Spot	% of Total Injury Crashes	Fatal Crashes	% of Hot Spot	% of Total Fatal Crashes
I95 and US 17	11	34.4%	15.1%	4	40.0%	14.8%	1	50.0%	50.0%
I95 and SR 200	21	65.6%	28.8%	6	60.0%	22.2%	1	50.0%	50.0%
Total	32			10			2		



Crash Analysis-Areas of Interest: I-95 -Past Year (April 14-April 15)

Nassau County: 73 Crashes on I-95 within the Past Year, 27 Injury Crashes, 2 Fatal Crashes



- ☒ Nassau_FatalCrashes
- ☒ Nassau_InjuryCrashes
- ☒ Nassau_Crashes
- ☒ Contour_Highest
- ☒ Nassau County

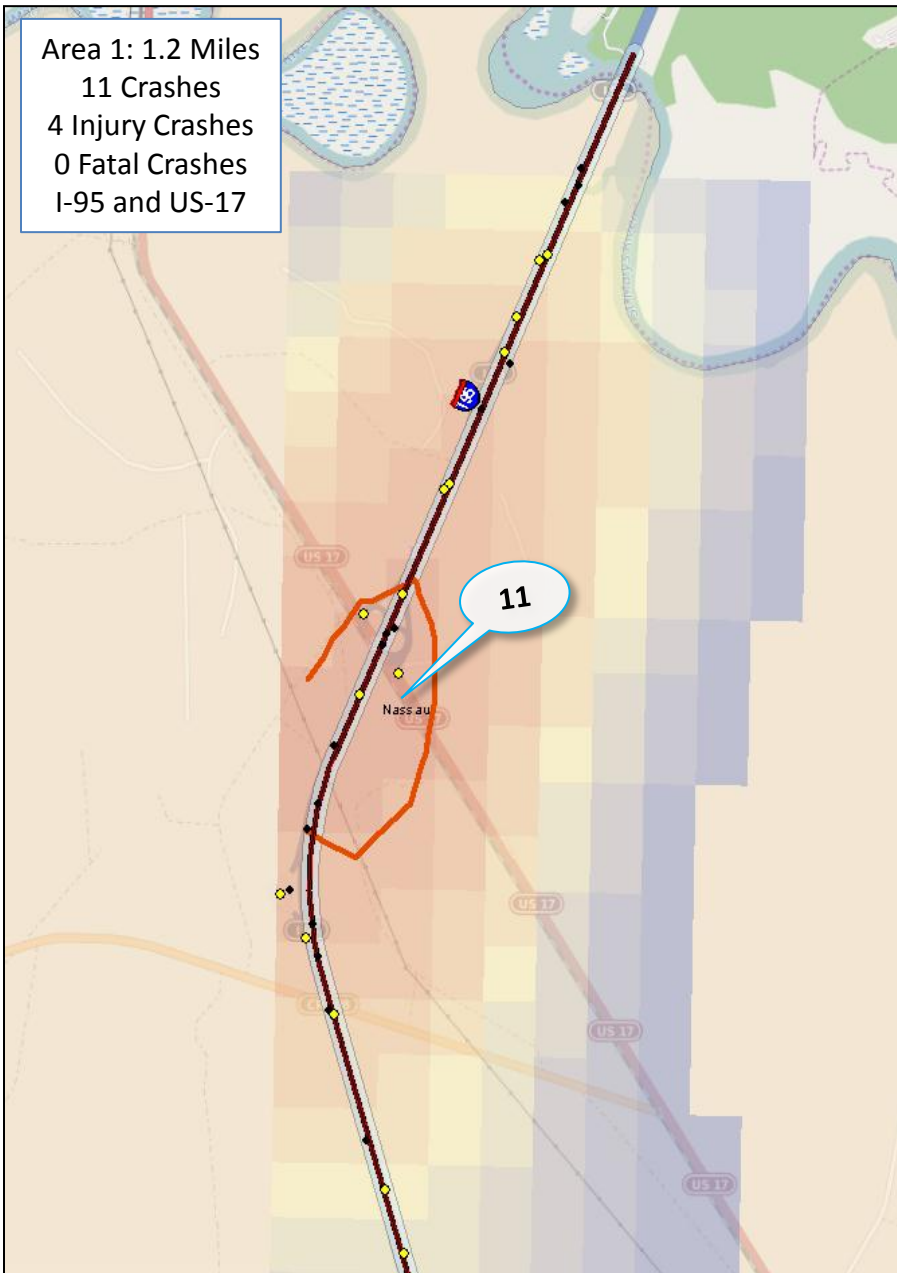




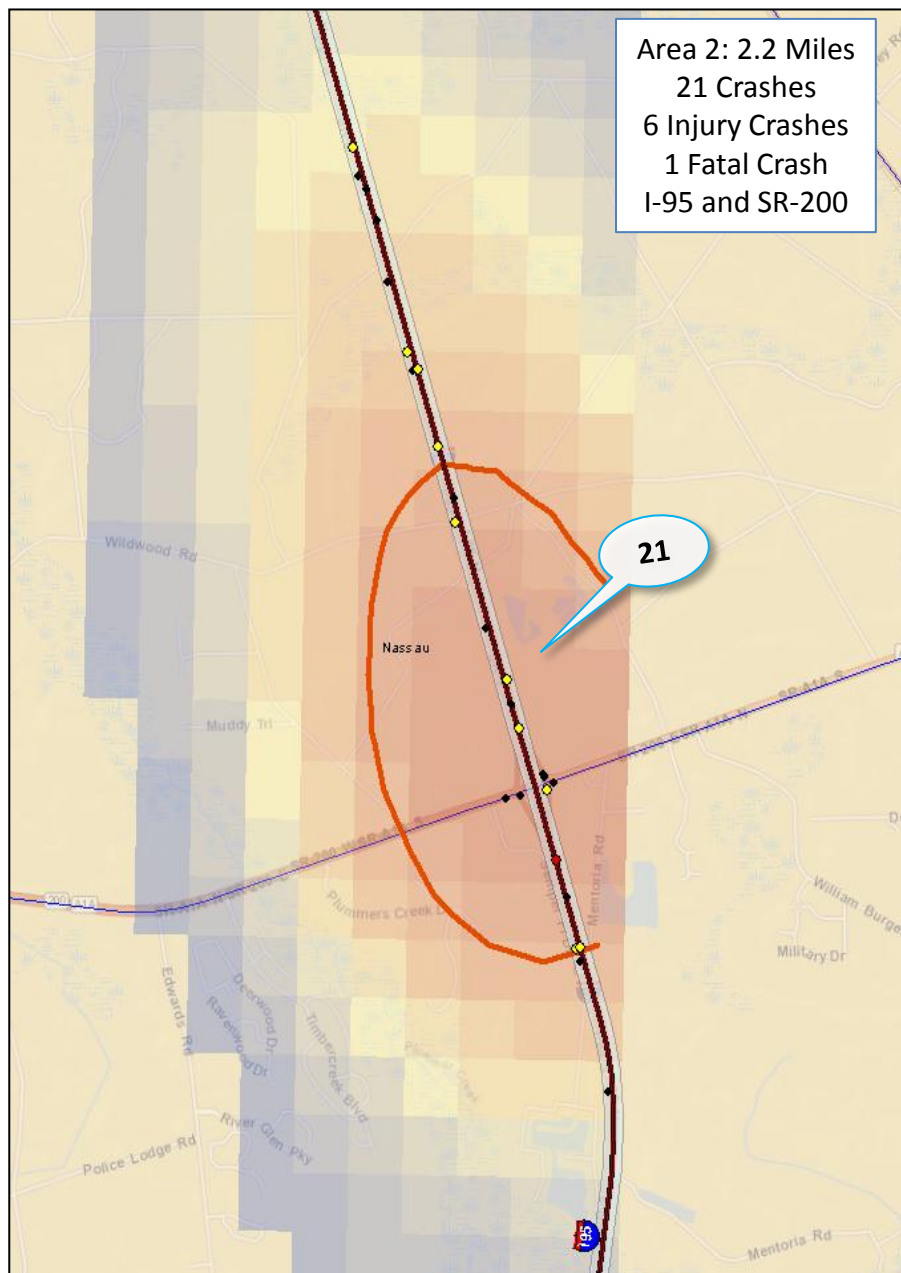
Crash Analysis-Areas of Interest: I-95 -Past Year (April 14-April 15)

Nassau County: 73 Crashes on I-95 within the Past Year, 27 Injury Crashes, 2 Fatal Crashes

Area 1: 1.2 Miles
11 Crashes
4 Injury Crashes
0 Fatal Crashes
I-95 and US-17



Area 2: 2.2 Miles
21 Crashes
6 Injury Crashes
1 Fatal Crash
I-95 and SR-200





Crash Analysis-Areas of Interest: I-95 -Past Year (April 14-April 15)

Duval County: 1,193 Crashes on I-95 within the Past Year, 373 Injury Crashes, 5 Fatal Crashes

Five Main Areas for Crashes Along I-95 in Duval County
Northern Part of the City (North of Downtown), I-95/Fuller Warren (Downtown area),
I-95 near Emerson St., I-95/SR 202 (JTB), I-95/Old St. Augustine Rd.

Chart shows numbers of Crashes, Injury Crashes and Fatal Crashes in each spot.

Percentage of the totals compared to the Hot Spots and Percentage of the totals compared to the overall number of crashes along I-95.

Duval County Crashes Along I-95	Crashes Along I-95								
	Crashes			Injury Crashes			Fatal Crashes		
	1193			373			7		
	Crashes	% of Hot Spot	% of Total Crashes	Injury Crashes	% of Hot Spot	% of Total Injury Crashes	Fatal Crashes	% of Hot Spot	% of Total Fatal Crashes
Norther Part of the City-North of Downtown	11	1.6%	0.9%	3	1.3%	0.8%	5	71.4%	71.4%
Fuller Warren (Downtown)	280	39.6%	23.5%	95	42.6%	25.5%	1	14.3%	14.3%
Near Emerson St.	165	23.3%	13.8%	51	22.9%	13.7%	0	0.0%	0.0%
SR 202 (JTB)	154	21.8%	12.9%	43	19.3%	11.5%	1	14.3%	14.3%
Old St. Augustine Rd.	97	13.7%	8.1%	31	13.9%	8.3%	0	0.0%	0.0%
Total	707			223			7	100.0%	100.0%

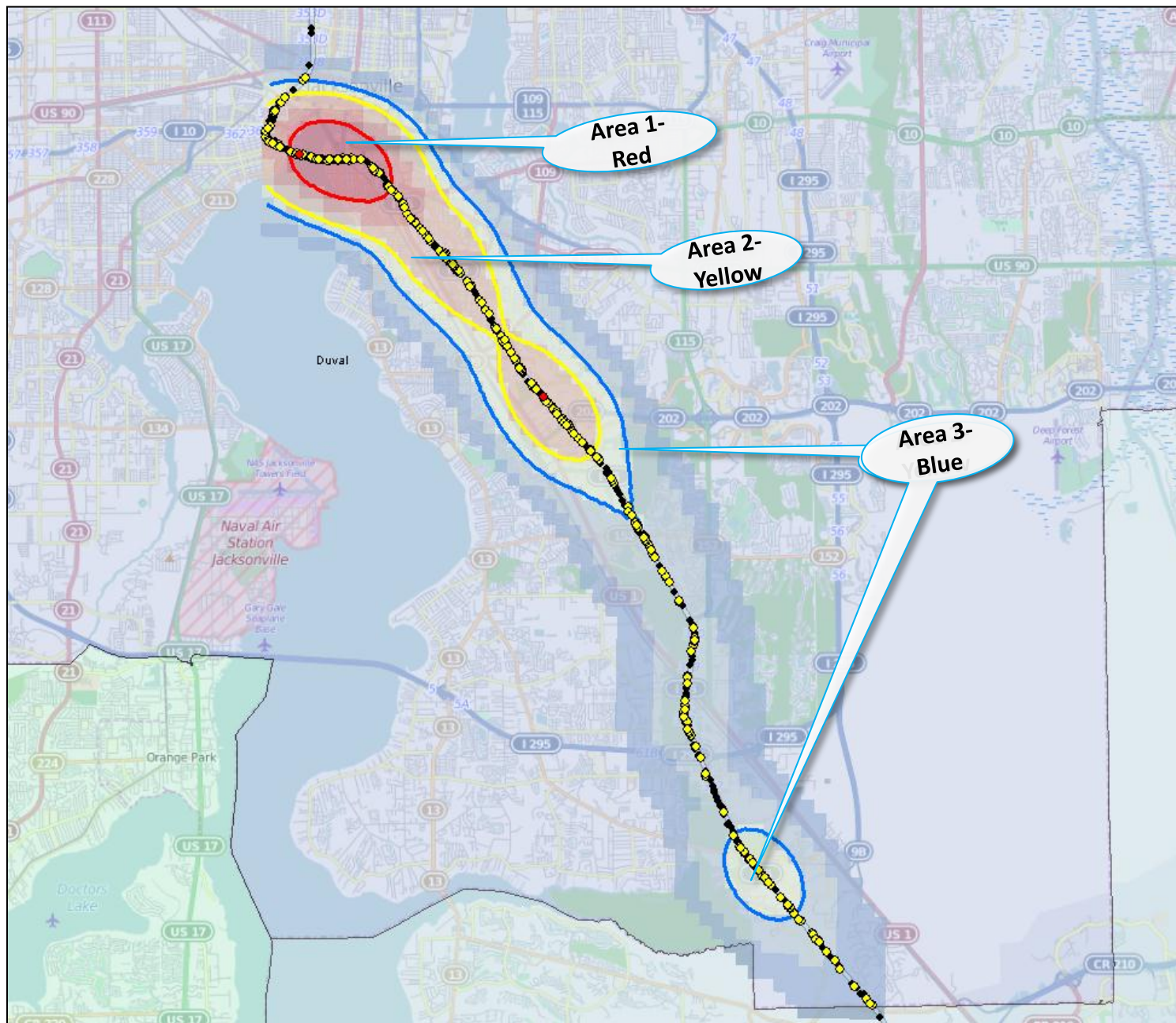


- ☒ Fatal Crashes_Duval County
- ☒ Injury Crashes_Duval County
- ☒ Crashes_Duval County



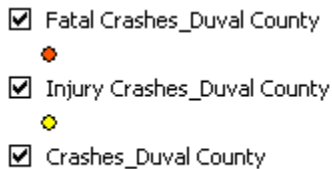


Duval County: 1,193 Crashes on I-95 within the Past Year, 373 Injury Crashes, 5 Fatal Crashes





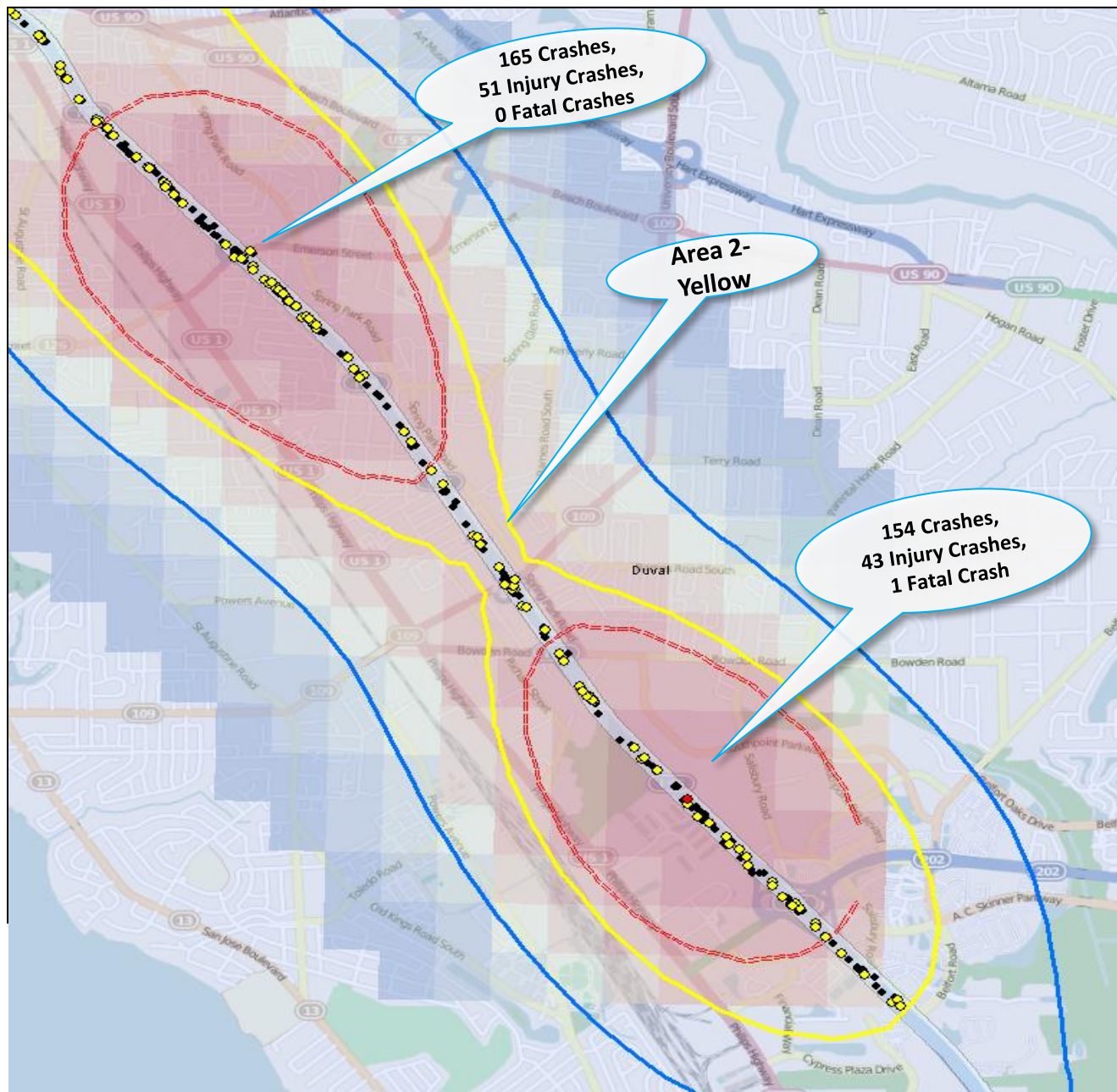
Area 1: 280 Crashes, 95 Injury Crashes, 1 Fatal Crash





Crash Analysis-Areas of Interest: I-95 -Past Year (April 14-April 15)

Duval County: 1,193 Crashes on I-95 within the Past Year, 373 Injury Crashes, 5 Fatal Crashes

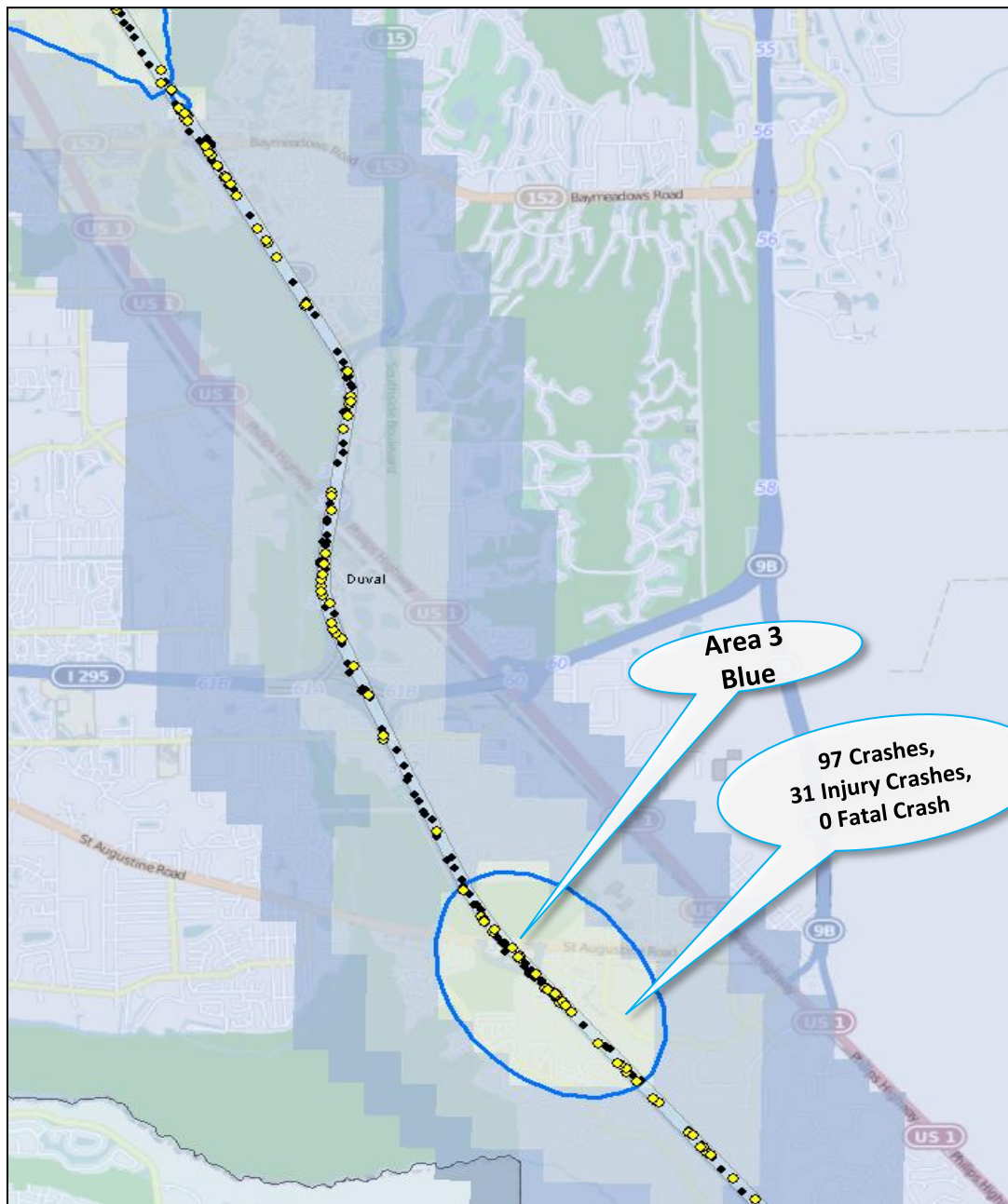


- ☒ Fatal Crashes_Duval County
- ☒ Injury Crashes_Duval County
- ☒ Crashes_Duval County



Crash Analysis-Areas of Interest: I-95 -Past Year (April 14-April 15)

Duval County: 1,193 Crashes on I-95 within the Past Year, 373 Injury Crashes, 5 Fatal Crashes



- ☒ Fatal Crashes_Duval County
- ☒ Injury Crashes_Duval County
- ☒ Crashes_Duval County



Crash Analysis-Areas of Interest: I-95 -Past Year (April 14-April 15)

St. Johns County: 354 Crashes on I-95 within the Past Year, 125 Injury Crashes, 9 Fatal Crashes

Four Main Areas for Crashes Along I-95 in St. Johns County
I-95/CR 210, I-95/International Golf Parkway, I-95/SR 16, I-95/SR 207

Chart shows numbers of Crashes, Injury Crashes and Fatal Crashes in each spot.

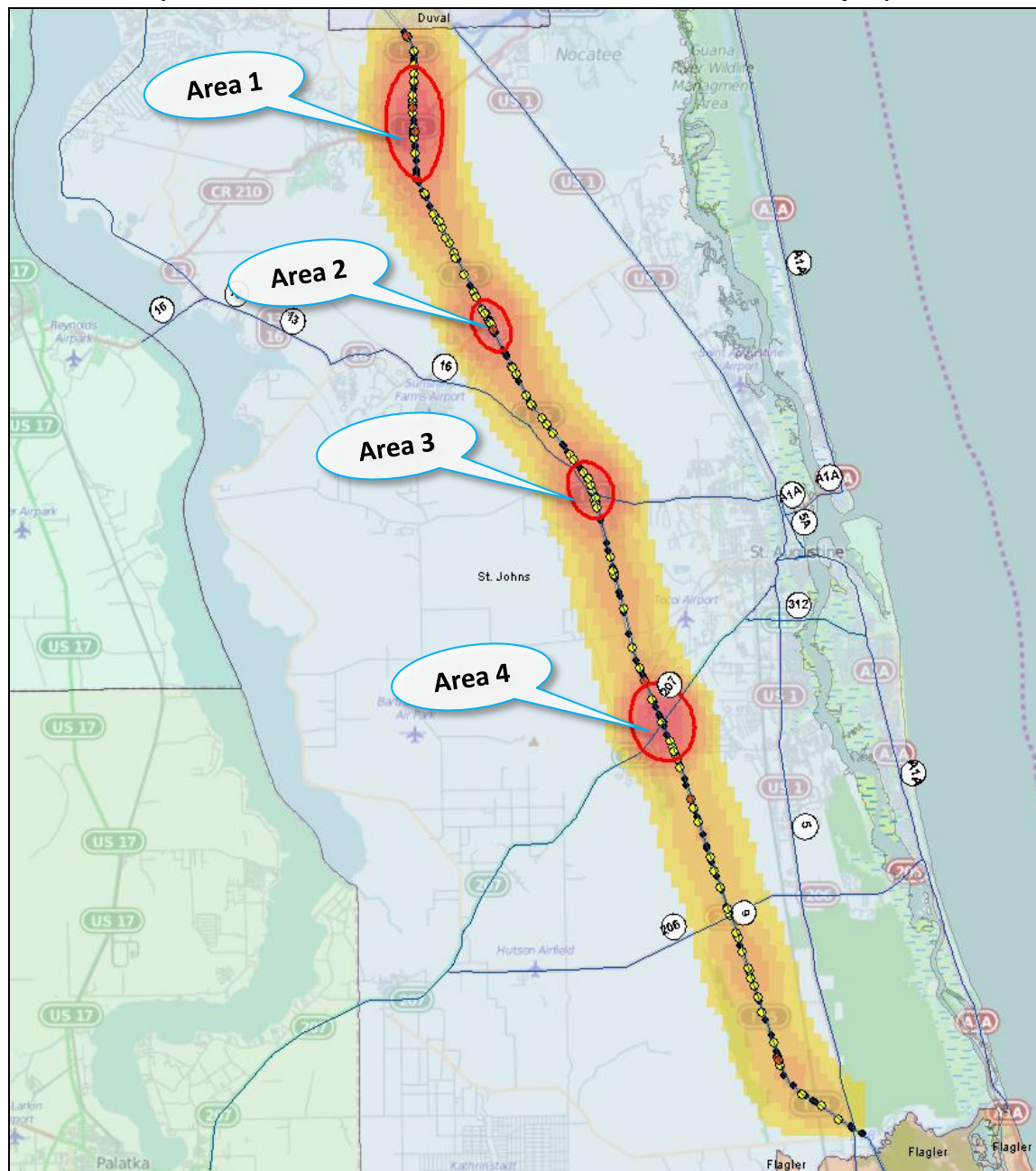
Percentage of the totals compared to the Hot Spots and Percentage of the totals compared to the overall number of crashes along I-95.

St. Johns County Crashes Along I-95	Crashes Along I-95								
	Crashes 354			Injury Crashes 125			Fatal Crashes 9		
	Crashes	% of Hot Spot	% of Total Crashes	Injury Crashes	% of Hot Spot	% of Total Injury Crashes	Fatal Crashes	% of Hot Spot	% of Total Fatal Crashes
CR 210	62	37.6%	17.5%	18	33.3%	14.4%	3	75.0%	33.3%
International Golf Parkway	25	15.2%	7.1%	10	18.5%	8.0%	1	25.0%	11.1%
SR 16	33	20.0%	9.3%	11	20.4%	8.8%	0	0.0%	0.0%
SR 207	45	27.3%	12.7%	15	27.8%	12.0%	0	0.0%	0.0%
Total	165			54			4		



Crash Analysis-Areas of Interest: I-95 -Past Year (April 14-April 15)

St. Johns County: 354 Crashes on I-95 within the Past Year, 125 Injury Crashes, 9 Fatal Crashes



☒ Crash Frequency-St. Johns



☒ Contour_Highest Frequency

☒ Fatal Crashes St Johns

☒ Injury Crashes St Johns

☒ Crashes St Johns



Crash Analysis-Areas of Interest: I-95 -Past Year (April 14-April 15)

St. Johns County: 354 Crashes on I-95 within the Past Year, 125 Injury Crashes, 9 Fatal Crashes

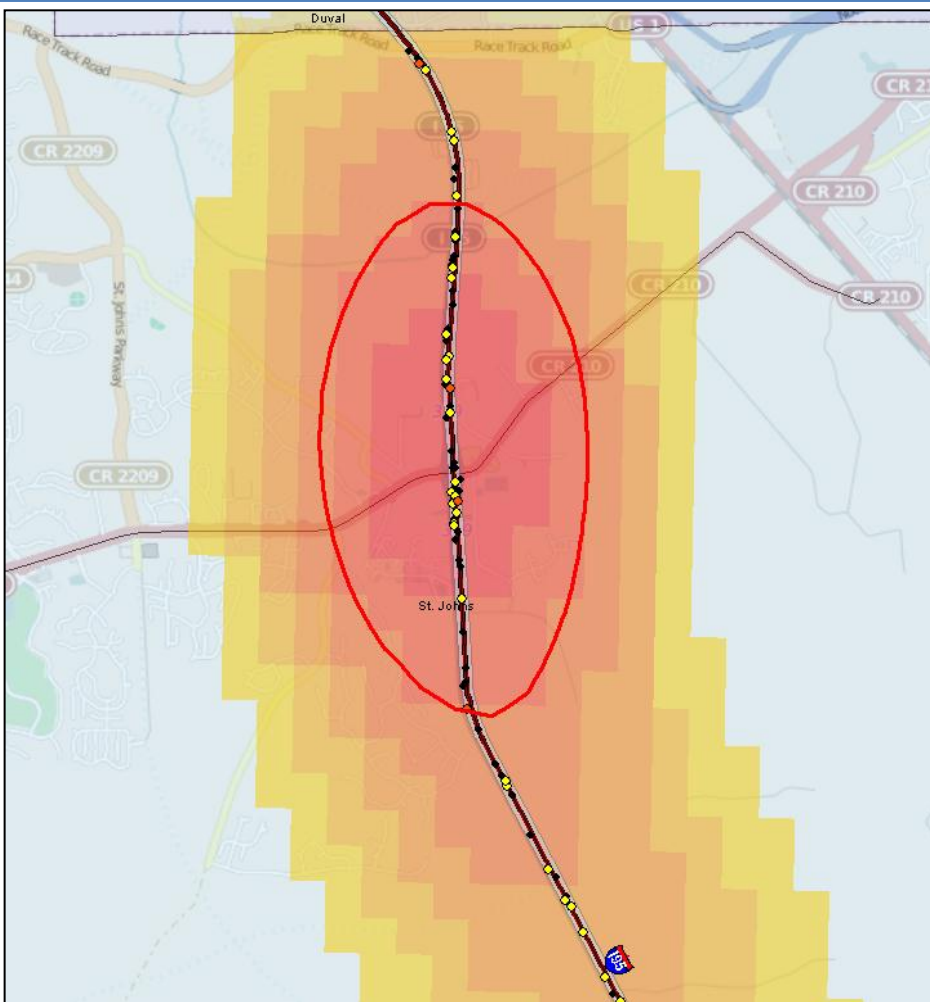
Area 1: I95/CR 210

(1.9 miles North of CR 210 and 1.6 miles South of CR 210)

62 Crashes

18 Injury Crashes

3 Fatal Crashes



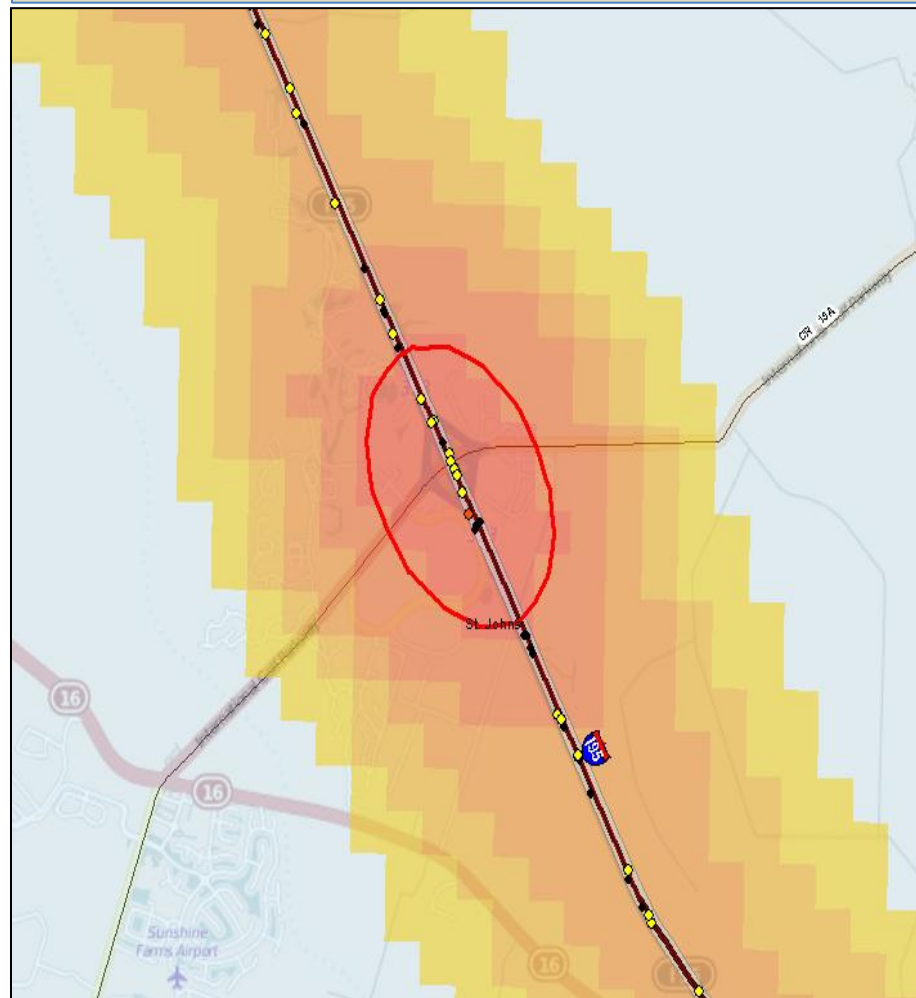
Area 2: I95/International Golf Parkway

(Approximately a half mile north and south of IGP)

25 Crashes

10 Injury Crashes

1 Fatal Crashes





Crash Analysis-Areas of Interest: I-95 -Past Year (April 14-April 15)

St. Johns County: 354 Crashes on I-95 within the Past Year, 125 Injury Crashes, 9 Fatal Crashes

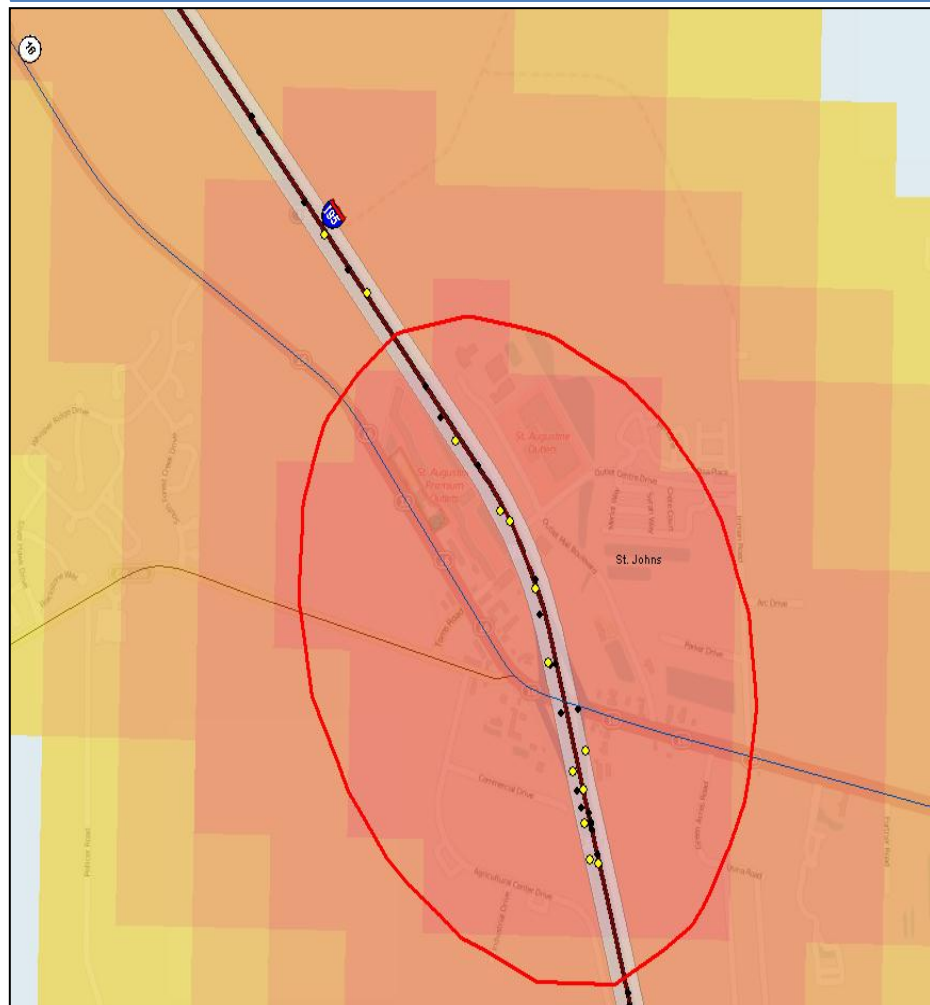
Area 3: I95/SR 16

(Approx. 1 mile north of SR 16 and ½ mile south of SR 16)

33 Crashes

11 Injury Crashes

0 Fatal Crashes



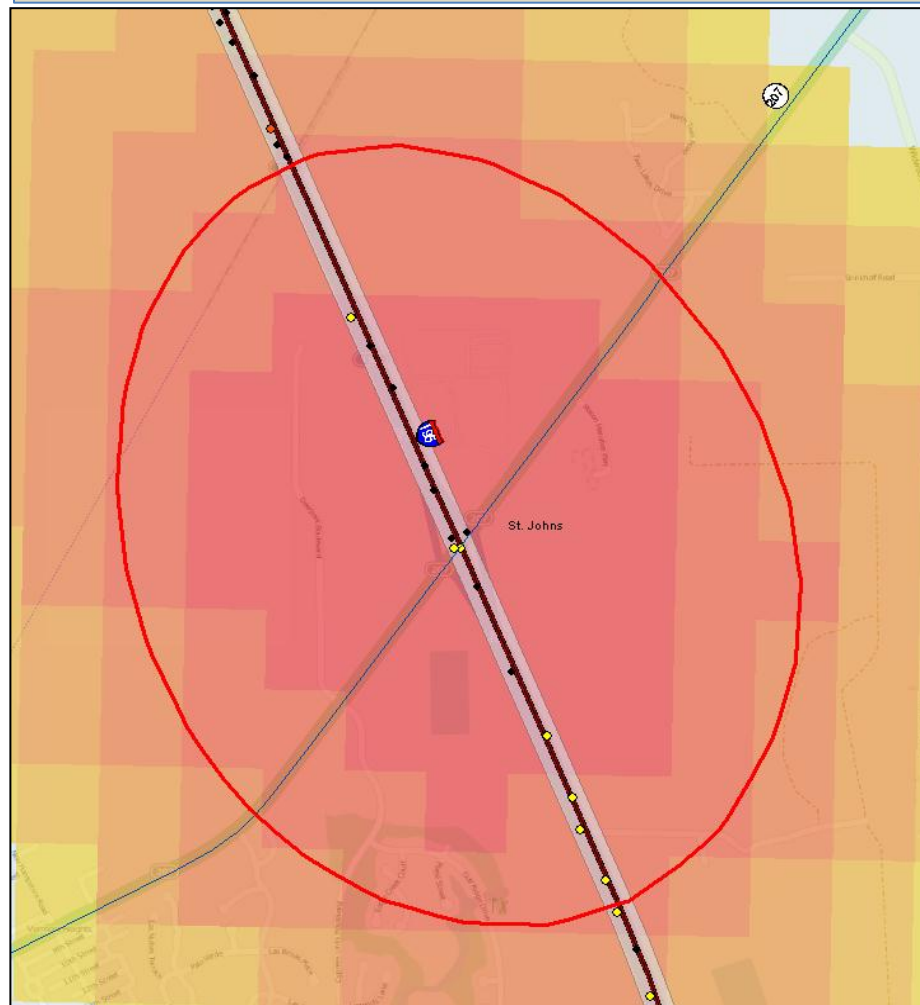
Area 4: I95/SR 207

(Approximately 1.3 miles north and south of SR 207)

45 Crashes

15 Injury Crashes

0 Fatal Crashes





Crash Analysis-Areas of Interest: I-95 -Past Year (April 14-April 15)

Flagler County: 93 Crashes on I-95 within the Past Year, 48 Injury Crashes, 2 Fatal Crashes

Three Main Areas for Crashes Along I-95 in Flagler County
I-95/Mantanzas Wood Parkway, I-95/SR 100, I-95/Old Dixie Hwy.

Chart shows numbers of Crashes, Injury Crashes and Fatal Crashes in each spot.

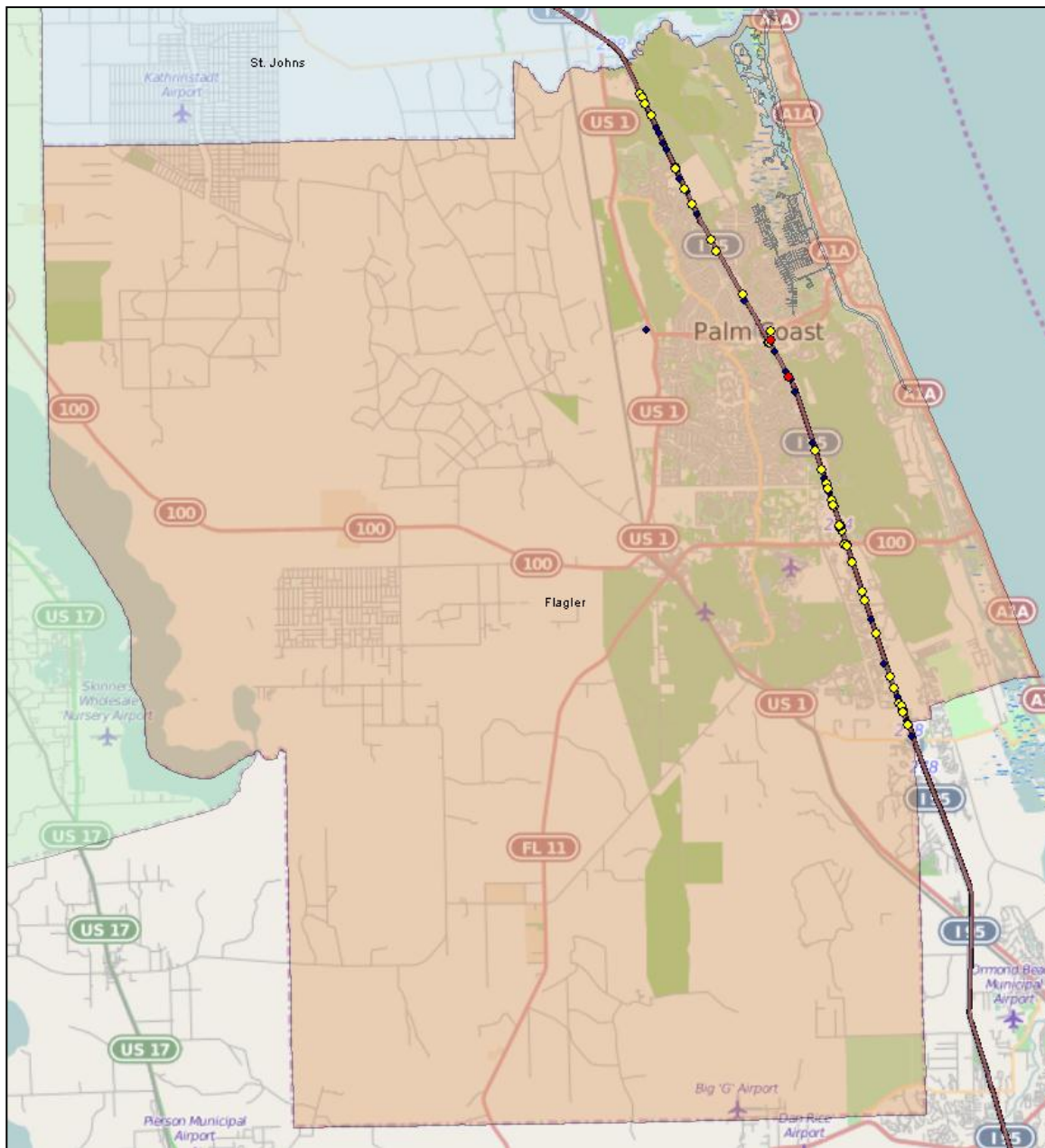
Percentage of the totals compared to the Hot Spots and Percentage of the totals compared to the overall number of crashes along I-95.

Flagler County Crashes Along I-95	Crashes Along I-95								
	Crashes			Injury Crashes			Fatal Crashes		
	93			48			2		
	Crashes	% of Hot Spot	% of Total Crashes	Injury Crashes	% of Hot Spot	% of Total Injury Crashes	Fatal Crashes	% of Hot Spot	% of Total Fatal Crashes
Mantanzas Wood Parkway	13	25.5%	14.0%	4	14.3%	8.3%	0	0.0%	0.0%
SR 100	23	45.1%	24.7%	14	50.0%	29.2%	0	0.0%	0.0%
Old Dixie Highway	15	29.4%	16.1%	10	35.7%	20.8%	0	0.0%	0.0%
Total	51			28			0		



Crash Analysis-Areas of Interest: I-95 -Past Year (April 14-April 15)

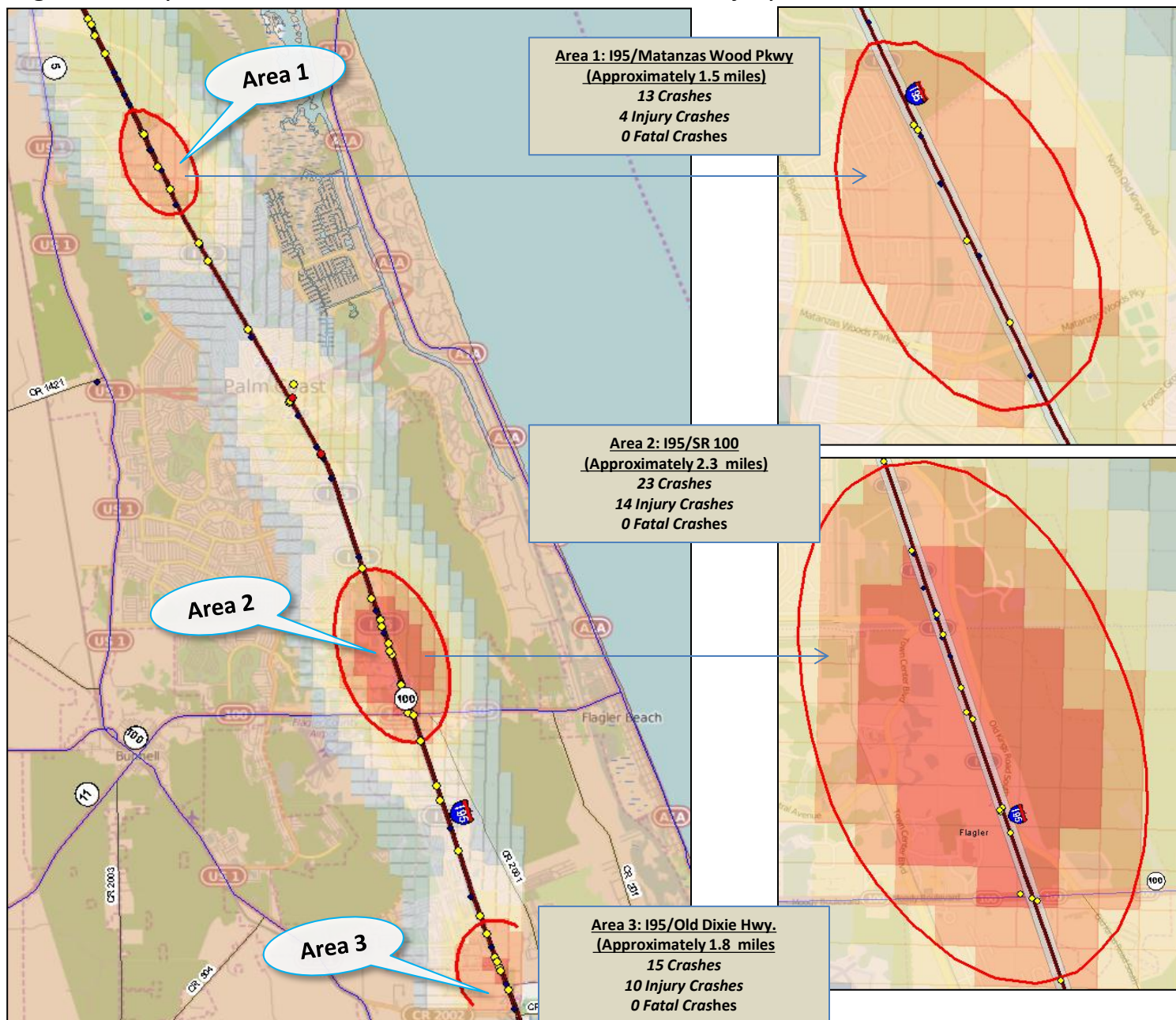
Flagler County: 93 Crashes on I-95 within the Past Year, 48 Injury Crashes, 2 Fatal Crashes





Crash Analysis-Areas of Interest: I-95 -Past Year (April 14-April 15)

Flagler County: 93 Crashes on I-95 within the Past Year, 48 Injury Crashes, 2 Fatal Crashes





Top Segments Along Interstate 95 in Nassau, Duval, St. Johns and Flagler Counties:

- Nassau County: I-95/US 17, I-95/SR 200
- Duval County:
 - I-95/Fuller Warren (Downtown area), I-95 near Emerson St., I-95/SR 202 (JTB), I-95/ Old St. Augustine Rd.
- St. Johns County: I-95/CR 210, I-95/International Golf Parkway, I-95/SR 16, I-95/SR 207
- Flagler County: I-95/Mantanzas Wood Parkway, I-95/SR 100, I-95/Old Dixie Hwy.